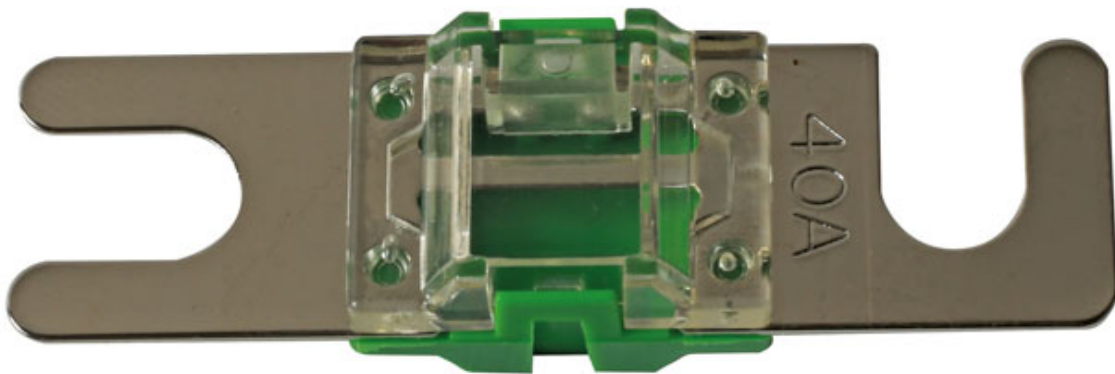


Midi Fuses, Open Ended 40A 2pc

A pack of 40 amp open ended midi fuses. The opened ended design enables fuses to be easily changed without removing the fixing bolts, saving time.



Additional Information

- 40 amp open ended midi fuses, with slotted fixing points for ease of use.
- Housing material: thermoplastic; metal: zinc nickel plated.
- Voltage rating: 32V DC max.
- Conforms to SAE J1171 & ISO 8820-5.
- Included in assortment of open ended midi fuses, Part No. 37645.

<http://product/37647>

